

Application Number 23/01063/FUL

Description: The demolition of existing structures and erection of a mixed-use development comprising: a Foodstore (Class E); a drive through coffee shop (Class E); a terrace of eight divisible employment units for flexible use within Use Classes E(g), B8 and B2 (vehicle repair garage only); a Use Class Sui Generis electric vehicle charging hub; and associated site works including land re-profiling, vehicular access, car parking, servicing areas, hard and soft landscaping, public realm and two electrical substations.

Address: Land Off Ashworth Lane And Stockport Road, Hattersley

Images 1: Aerial views

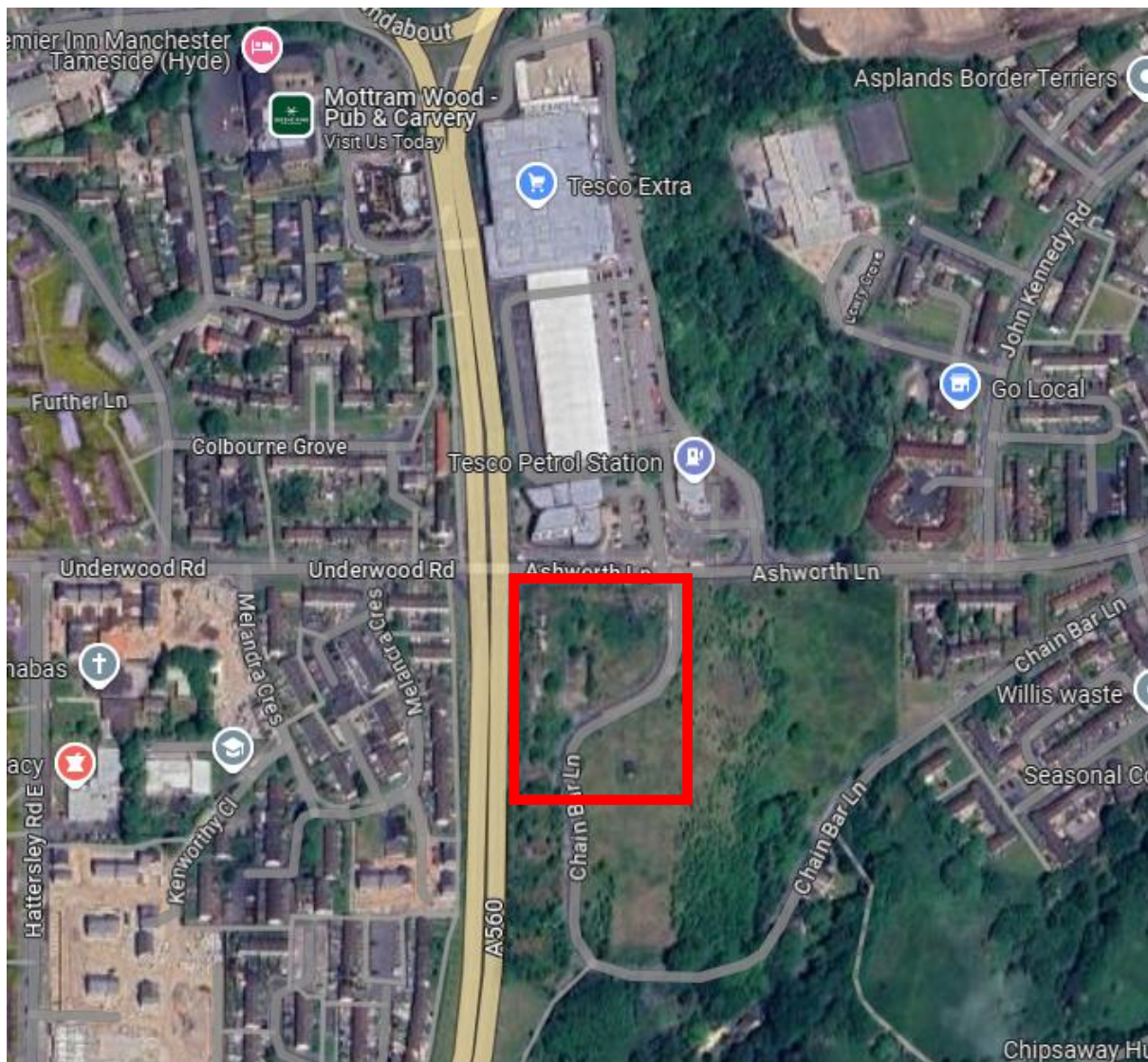


Image 2: Chain Bar Lane Entrance from Ashworth Lane



Image 3: Typical site conditions looknig south within the site



Image 4: View from Ashworth Lane south

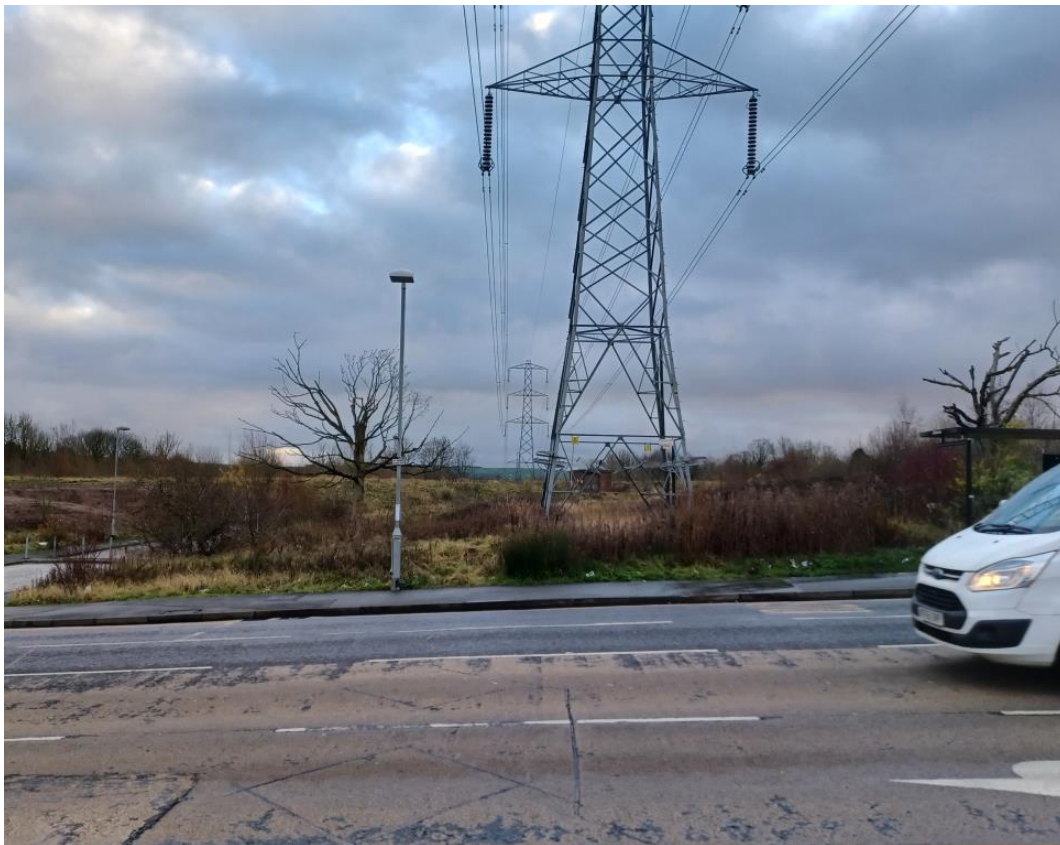


Image 5: Google image looking west across the site from Chain Bar Lane

